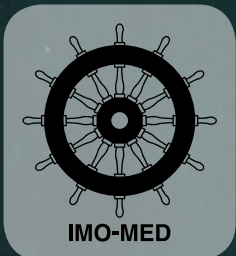




# Marine by FORMICA GROUP

THE LEADER IN GLOBAL SURFACING SOLUTIONS FOR THE MARINE INDUSTRY



## About Formica Group

Formica Group is a leading provider of branded, designed surfacing solutions for commercial and residential customers worldwide. As the world's largest manufacturer of High Pressure Laminate (HPL), our international footprint of design, manufacturing, distribution and sales operations maintains the recognition of Formica® as a global brand.

The heritage and brand reputation of the Formica Group of companies has been founded on quality, service and innovative product lines. We have developed an unrivaled expertise that ensures products meet the needs of their applications — as well as market demands.

Working closely with architects, designers and developers, the company is strategically positioned to offer new products and surfacing solutions that complement current design trends. Our ongoing product design and development process underscores our commitment to innovation.

We know how important timescales can be, especially within the marine sector, so Formica Group put an emphasis on customer service and delivery. Our Global Marine Team offers technical support to all our customers regarding certification, application, use and availability. As a global manufacturer, we pride ourselves in ensuring that products will be where you need them, when you need them.

## What we stand for

Formica Group has a proud heritage, supported by a strong brand.

Formica Group's vision is to be the leading decorative laminate company worldwide. This vision is supported by core values which will help us to continue to lead the market both through innovation and with a design-focused approach.

We aim to be the customer's first choice to do business with and to build close and mutually beneficial relationships with our customers, suppliers and partners. Ensuring marketplace and customer satisfaction are the driving forces behind all we do, we understand that listening to our customers is important.

As a global manufacturer, the environment is an important factor in our daily manufacturing and distribution decisions. Formica Group is committed to safeguarding the Earth's natural resources, by using paper from recycled sources and sustainable softwood forests.

Paper accounts for approximately 70% of the makeup of a sheet of laminate and therefore our procurement policy is one of sourcing raw materials from responsible vendors using managed renewable sources. We have been awarded Forestry Stewardship Council (FSC) Chain of Custody Certification for all our manufacturing sites and distribution centres globally.

DecoMetal®

METAL LAMINATES by FORMICA GROUP

HardStop™

DECORATIVE PROTECTION PANELS by FORMICA GROUP



**M6484** Argent Craft

**F7923** Surf

**F6413** Silver Riftwood - Hardstop™



# Suitable for all surfacing solutions

F7969 Navy Blue - Matte 58

F5887 Millenium Oak - Matte 58

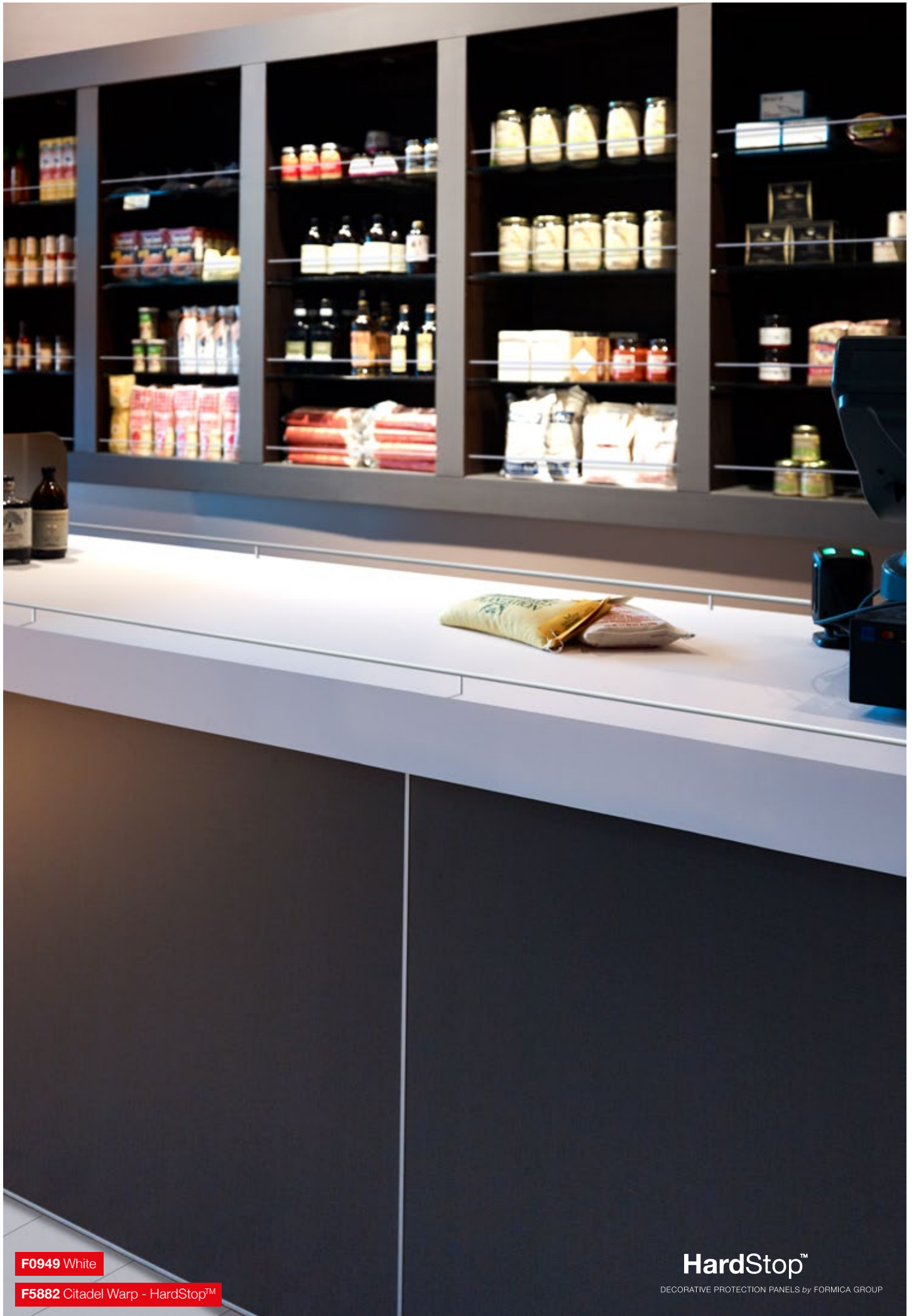


**F2255** Polar White - Satin NDF

**F2833** Sandstone - Matte 58

**F5323** Nocturne - Matte 58





F0949 White

F5882 Citadel Warp - HardStop™

HardStop™

DECORATIVE PROTECTION PANELS by FORMICA GROUP

## Marine by Formica Group

Formica has a rich history of supply into the marine industry, as far back as to the building of the iconic British cruise liner, the Queen Elizabeth 2 (QE2).

We still work closely with our customers from all areas of the sector including shipping companies, designers, architects, fabricators, contractors and shipyards.

The International Maritime Organisation (IMO) is the global standard-setting authority for the safety, security and environmental performance of international shipping. It creates a regulatory framework for the shipping industry that is universally adopted and implemented. The IMO is responsible for a number of conventions including SOLAS (Safety of Life at Sea). Formica will ensure that our products meet the IMO requirements following SOLAS rules, each vessel will meet the global safety requirements on board, ensuring our customers peace of mind.

Products from all our global manufacturing facilities are certified to meet IMO requirements, ensuring that customer needs can be met irrespective of design, fabrication and build location. These include decorative and abrasive resistant HPL from our global décor collection, lustrous DecoMetals and our luxurious new leather collection. All certified products can be made in a vast range of decors, textures and sizes to meet the marine industry's needs.

For those applications where IMO certification is not a requirement then we have a number of products which can be used to compliment your designs.

Our dedicated marine team can offer support and advice to ensure that you receive the right material, at the right time in the right place.



## Custom digital print laminate

Create the unique look with the Formica Custom Digital print option.

Our one-of-a-kind service that enables you to design a laminate and fully integrate patterns, logos, photographs, or graphics into your project design, creation and installation.

Any image that compliments your design can be used to create that special IMO certified laminate.



# 180fx<sup>®</sup> / TrueScale

Drawing on new technologies, 180fx / TrueScale by Formica Group captures the large-scale sweep of stone and wood slabs to replicate the exquisite veining and grain that characterizes real stone and wood, in a high-definition laminate.

Unmatched in visual drama, the 180fx / TrueScale Collection features a modern and sophisticated palette - versatile enough to pair with any interior design concept. Affordable luxury knows no boundaries.

The 180fx / TrueScale Collection is available in IMO certified grades and thicknesses.

**TRUESCALE**  
by FORMICA GROUP

**180fx**  
by FORMICA GROUP  
LAMINATE AS LARGE AS LIFE



F7413 Planked Coffee Oak

M5391 Graphite Veil

DecoMetal®

METAL LAMINATES by FORMICA GROUP



DecoMetal®

Glamorous and hardworking, DecoMetal is available in lustrous colors and sensuous textures that create striking feature walls, furniture, fixtures and displays in a distinctly modern mood.

DecoMetal is ideal to create that luxurious feel for bars, restaurants, theatres etc and are certified against the current International Maritime Organization (IMO) standards, DecoMetal can be used for vertical and light-duty horizontal applications.

# Formica HardStop®

HardStop is a new decorative protection panel with superior impact resistance that is available in the full spectrum of Formica Group color ranges.

Unlike traditional laminate that contains a paper core, HardStop features a fiberglass core for added durability and strength. HardStop Panels are impact- and water-resistant, easy to clean, dimensionally stable, have a Class A fire rating and IMO certification.

Designed to be applied directly to drywall and perfect for vertical applications in settings such as corridors, restaurants and elevators, which would benefit from a more durable surface solution.

Hardstop is under testing and subject to USCG certification.

F8826 Neutral Twill

HardStop™

DECORATIVE PROTECTION PANELS by FORMICA GROUP





**F8515** Black Basic

**F5618** Coal Buffalo

## New leather collection

The collection's colour spectrum has been designed to compliment current market trends. It is available in a number of decors with a variety of textures and contemporary shades, making it ideal for a vast range of interior design applications.

Artificial leather is easy to care for and much more durable than real leather. It is also available in larger sizes for ease of fitting.

The surfaces can be reproduced as often as necessary and are more light resistant than comparable surfaces made of real leather. It is already pressed with a permanent embossing onto a hard HPL core so that it can be fitted using standard tools and is consequently less resource intensive.

With our New Leather Collection, you get the look of real leather with the durability, convenience and decor choice of laminate. Ideal for bars, restaurants and theatres.

# Alternative surfacing options

## **Formica® Compact**

Versatile, practical and beautiful, Formica Compact is a structural, two-sided decorative panel that is ideal for interior use such as wall panels, restroom partitions, counters, utility cabinets or furniture. Choose from a fresh palette of Formica Brand Laminate solid colors, rich woodgrains and patterns that range from elegant stone looks to abstract graphics.

## **ColorCore®**

A surfacing product with solid color all the way through, ColorCore laminate gets down to business when it comes to performance and versatility. ColorCore can be machined, routed or engraved to create striking design effects any way you cut it.

ColorCore is ideal for applications such as countertops, cabinets, doors, work surfaces, casework - or anywhere you don't want to see the dark seam lines associated with traditional laminate edges. utility cabinets or furniture.

Formica® Compact

STRUCTURAL LAMINATES by FORMICA GROUP



F9485 Nero Grafite

# Alternative surfacing options

## **Formica Infiniti®**

Visually striking at first glance, but with state-of-the-art functionality and surprisingly little maintenance required - that is just the beginning with Formica Infiniti, a game changer in surfacing.

As beautiful as it is durable, Formica Infiniti surfacing features a soft-to-the-touch super matte finish, and has thermal healing capabilities. Formica Infiniti is available in all Formica Group standard colors on a made-to-order basis.

Choose from a fresh palette of Formica® Laminate solid colors, rich woodgrains and patterns that range from elegant stone looks to abstract graphics.

---

Today's laminates come in vibrant upbeat hues, nature-inspired tones and well-chosen, neutrals that go with everything, including modest budgets. Mix and match solids, woodgrains, abrasive resistant, graphic patterns or stone looks to achieve your project goals.

Our laminates are available in any thickness from 0.6mm to 1.2mm and in standard, postforming and fire retardant grades.

Pick your decor from any one of the Collection brochures then simply choose a size, texture, thickness and a grade.



ColorCore®

SOLID COLOUR LAMINATES by FORMICA GROUP

Formica Infiniti®

ENDURING MATTE by FORMICA GROUP

Our macarons are gluten free and contain nuts, eggs, and dairy.



**F7223** New White

**CC8841** White Ash

**F7912** Storm

**F7961** Fog

**F7927** Folkestone

**F7923** Surf

# Sustainability

Formica Group is committed to making sustainable principles and practices a part of everything we do. We strive to adhere to the highest ethical standards as we advance in our efforts to protect vital resources for future needs.

Formica Group is the first laminate manufacturer in the world to be awarded the Carbon Trust's Carbon Reduction Label: Surface area of approximately 100 million square meters of Formica® products is now carbon labeled; this equates to 13,703 x the area of an average football pitch.

The products certified and carrying the Carbon Reduction Label represent 90% of Formica Group's total products worldwide.

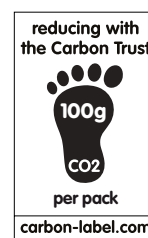
Formica Group has taken significant steps to ensure that its products promote a healthy indoor air quality in homes, offices, schools and other indoor environments. According to the US Environmental Protection Agency (USEPA), the most effective way to reduce indoor air pollution is to reduce or eliminate harmful chemical emissions.

FSC Chain of Custody certification is awarded to companies that can track and document FSC certified material through the production process, from the forest to the consumer, including all successive stages of procurement, processing, manufacturing, distribution and sale of certified goods.

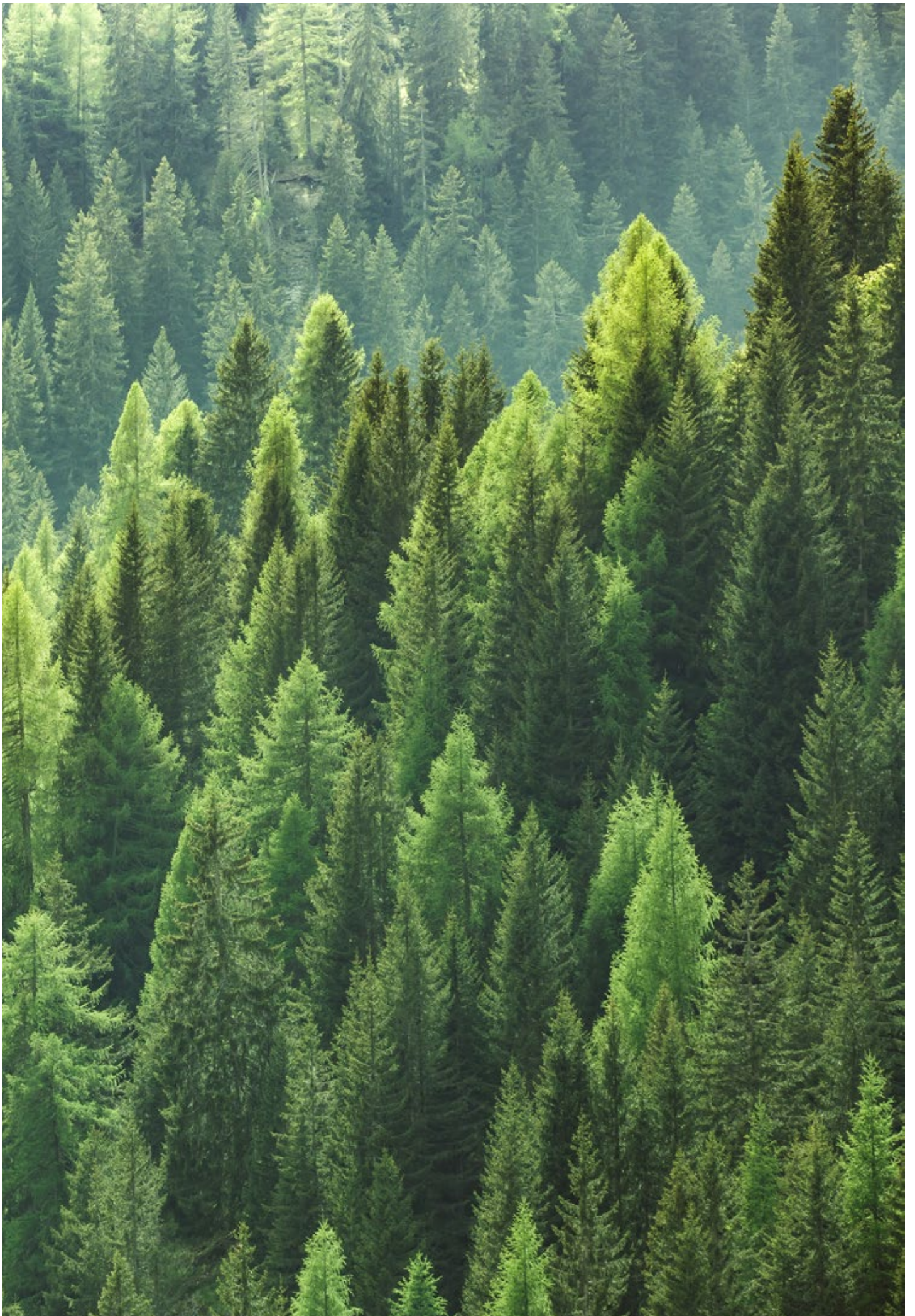
## What is the main aim of REACH?

To monitor how the production and use of chemicals is impacting upon the health and environment of the European Union. REACH may request a reduction of output of a particular chemical or its removal altogether.

To encourage change and innovation in chemical development of products which are more environmentally and user friendly. To minimise animal testing.



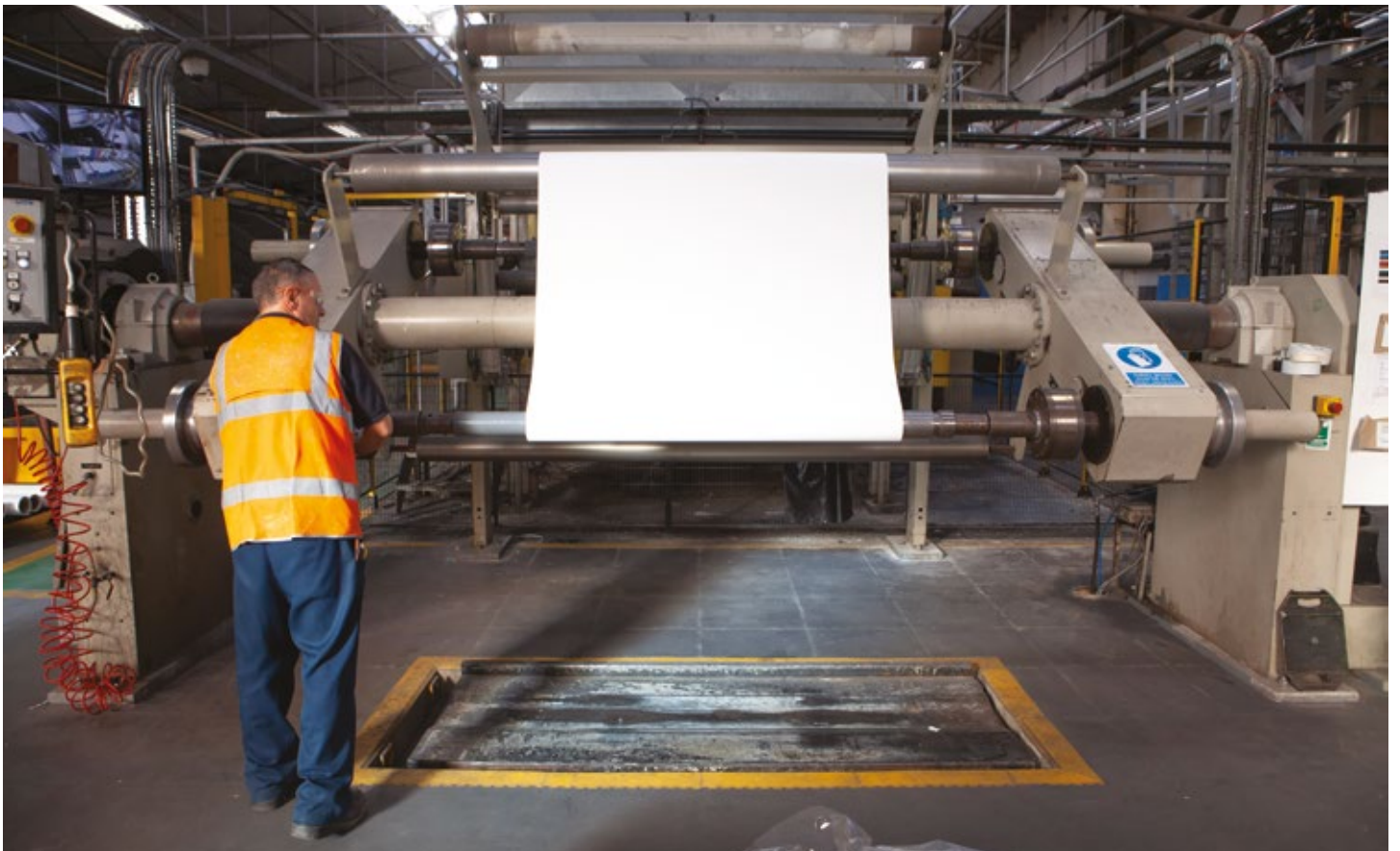






# Global manufacturing footprint

- The inventor of decorative laminates
- Global footprint of manufacturing, distribution and sales
- Consistent product selection and quality across multiple markets
- Dedicated and experienced global customer team
- Competitive price, availability and service
- Strong focus on innovation, environment and sustainability



# Product testing

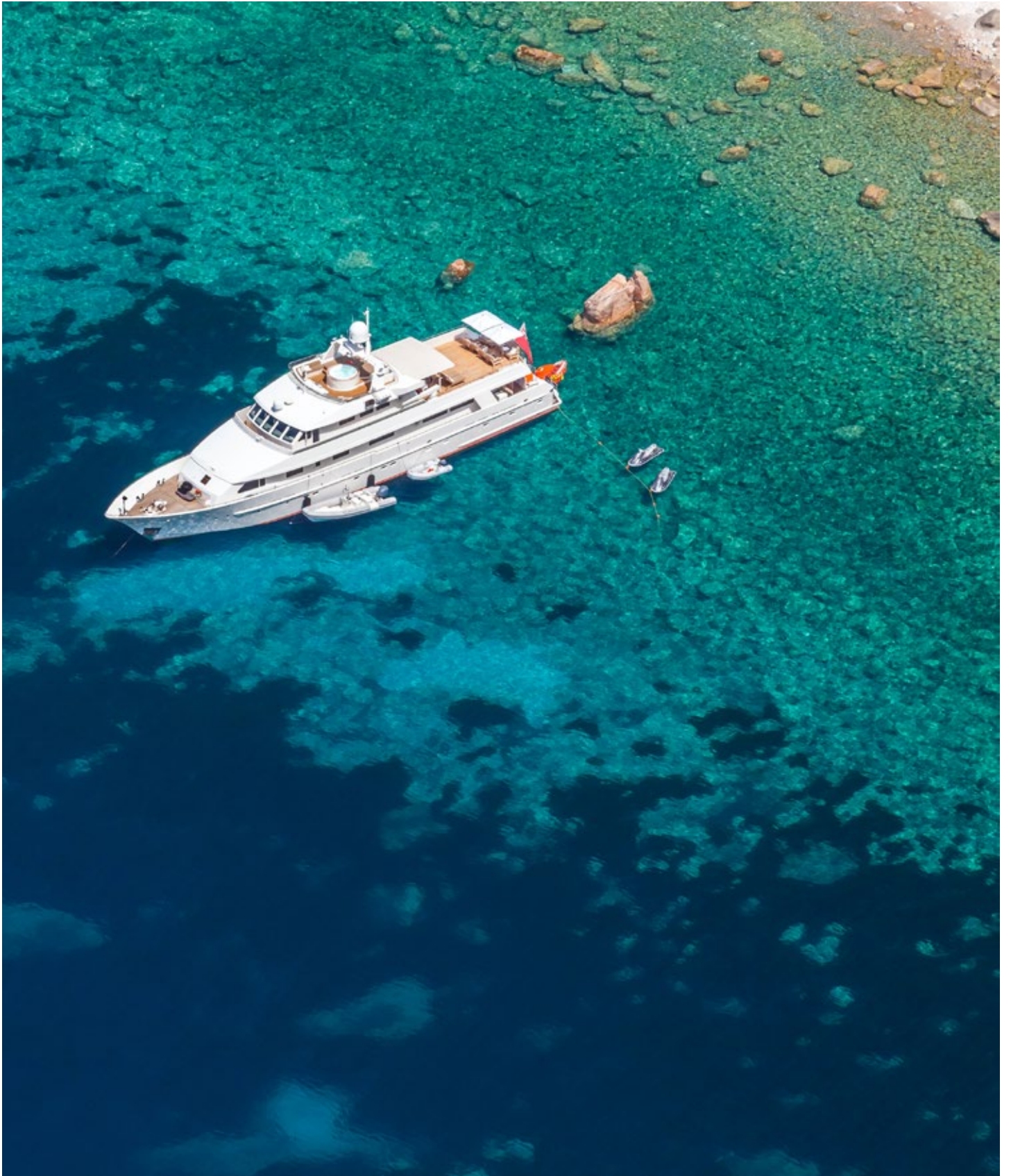
Formica® Group products are tested in accordance with local regulations.

For more information, brochures and Technical Datasheets for all products please visit [formica.com](http://formica.com)

Characteristic	Method (EN438)	Grade					Formica Infiniti® HGF
		HGP	HGF	HGS	VGS	MTP	
Surface Defects	EN438:2016-2-4 Dirt/Spots Fibres/Hairs/Scratches	< 1	< 1	< 1	< 1	< 1	< 1
		< 10	< 10	< 10	< 10	< 10	< 10
Surface Wear Resistance	EN438:2016-2-10	> 150	> 150	> 150	> 50		> 200
Immersion in Boiling Water	EN438:2016-2-12 Gloss Other	3	3	3	3	No core delam	4
		4	4	4	4		
Resistance to Water Vapour	EN438:2016-2-14 Gloss Other	3	3	3	3	3	4
		4	4	4	4	3	
Resistance to Dry Heat (160°C)	EN438:2016-2-16 Gloss Other	3	3	3	3		4
		4	4	4	4		
Resistance to Wet Heat (100°C)	EN438:2016-2-16 Gloss Other	3	3	3	3		4
		4	4	4	4		
Dimensional Stability	EN438:2016-2-17 Longitudinal Transverse	< 0.55	< 0.55	< 0.75	< 0.55	< 0.75	< 0.65
		< 1.05	< 1.05	< 1.25	< 1.05	< 1.25	< 1.07
Impact Resistance (Small Ball)	EN438:2016-2-20	> 20	> 20	> 15	> 20		> 30
Resistance to Cracking	EN438:2016-2-23	4	4	4	4	4	4
Scratch Resistance	EN438:2016-2-25 Smooth Textured	3	2	2	1	1	4
		5	3	3	2	1	
Stain Resistance	EN438:2016-2-26 Group 1&2 Group 3	5	5	5	5	4	5
		4	4	4	4	4	4
Light Fastness	EN438:2016-2-27	4 to 5	4 to 5	4 to 5	4 to 5	4	4 to 5
Postforming Radius	EN438:2016-2-31	< 10x thickness				< 10x thickness	8mm
Resistance to Blistering	EN438:2016-2-33	> 10				> 15	> 10

Characteristic	Method (LD3-2005)	Grade		Characteristic	Grade New Leather from Homapal
		50/HGF	32/VGF		
Appearance	3.1	No ABC defects	No ABC defects	Density	1.8kg/m2
Boiling Water Resistance	3.5	No effect	No effect	Scratch Resistance	Normal
High Temperature Resistance	3.6	Slight	Slight	Impact Resistance	Normal
Impact Resistance	3.8 in mm	45 (min)	20 (min)	Maximum Temperature	60°C
		1143 (min)	508 (min)		
Radiant Heat Resistance	3.1	75 (min)4	50 (min)	Light Fastness (ISO 105-B02)	6.0
Dimensional Change Resistance	3.11 Machine Cross	0.5 (max)	0.7 (max)		
		0.9 (max)	1.2 (max)		
Cleanability	3.4	20 (max)	20 (max)		
Stain Resistance	3.4 Reagents 1-10 Reagents 11-15	No effect	No effect		
		Moderate	Moderate		
Light Resistance	3.3	Slight	Slight		





Marine by FORMICA GROUP



**formica.com**

globalmarine@formica.com