

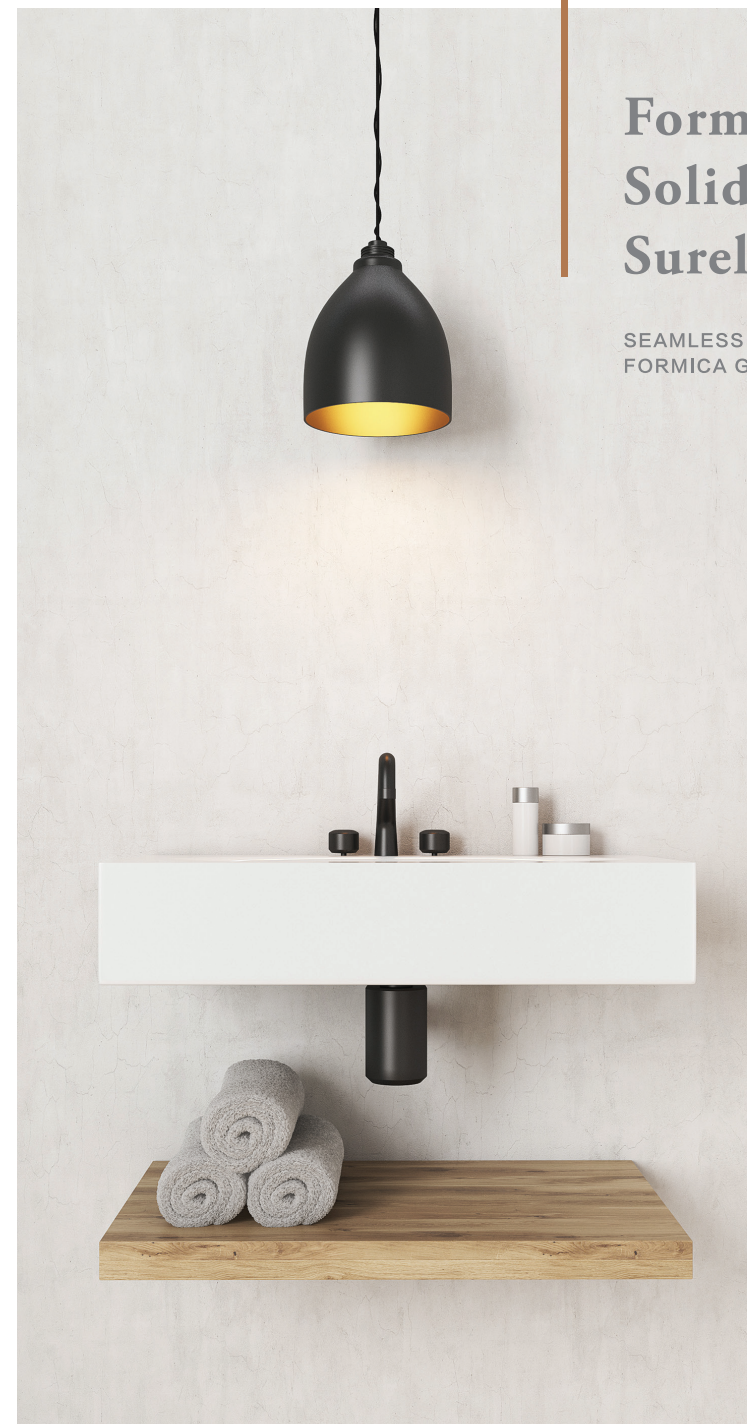


FORMICA FOR MORE, FORMICA FOR ME

富美家®
实体面材
色麗石®

自然之美，蓬勃灵动，富美家®色麗石®几乎可以将任何设计概念塑造成现实，丰富的色彩和纹理搭配为您创造无限灵感，无缝拼接的效果为使用者带来柔和触感和视觉的享受。坚固、美观、耐用的富美家®色麗石®是您空间造型设计的理想选择。

FORMICA®



Formica®
Solid Surfacing
Surell®

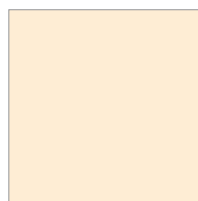
SEAMLESS NONPOROUS SURFACES BY
FORMICA GROUP

自然之美·蓬勃灵动

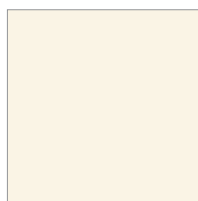


Solid Collection | 纯色

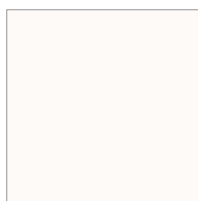
Versatile neutrals are economical and stylish for counters, walls or window sills.



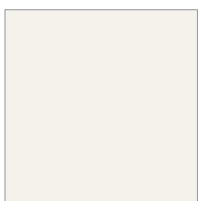
Ivory White
SM6911
象牙白



Cream White
SM6912
奶白



Alabaster
SM3639
雪花白



Arctic
SM3101
北极白



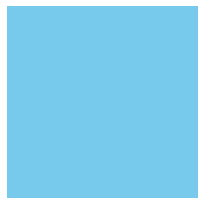
Ultra White
SM6908
超白



Rose
SM6904
蔷薇



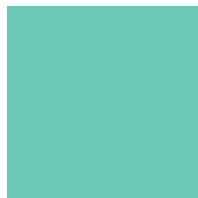
Sun
SM6903
太阳



Sky Blue
SM6906
天蓝



Vivid Green
SM6907
嫩绿



Jade green
SM6905
翡翠



Mandarin
SM6901
桔子



Hot Red
SM6910
火红



Dark Grey
SM6909
深灰



Noctume
SM6902
黑夜



Elegant Collection | 纯雅

As a highend and hi-tech color with classic charactor, it's always an excellent choice for all styles

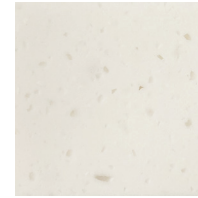


Almond Fancy
SM6951
冰川白



Silestone Collection | 岩麻

Our finest surfaces offer an array of upscale looks soft neutral to dazzling colors



Pearl Agate
SM3617
雪花片



Linen
SM3566
亚麻布



Vanilla
SM2193
香草蜜



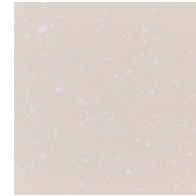
Hailstones
SM3512
冰雹



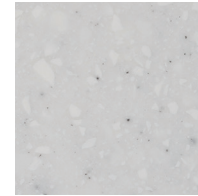
Milky Sands
SM2197
白沙



Milk Mist
SM2195
雾白



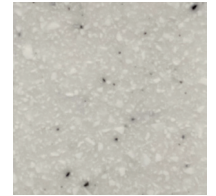
Glacier Ore
SM3653
汉白玉



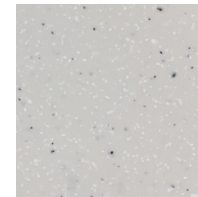
Snowflake
SM3502
雪花玉



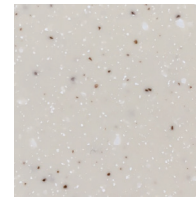
Abalone
SM3518
鲍鱼



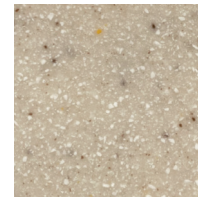
White Quartz
SM3104
石英白



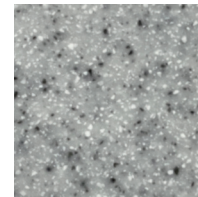
Winterhaze
SM3440
寒星石



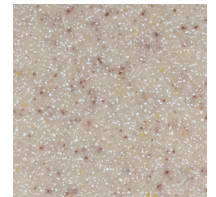
Cognac Agate
SM3624
玛瑙黄



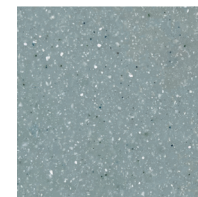
Almond Hemp
SM2191
扁桃麻



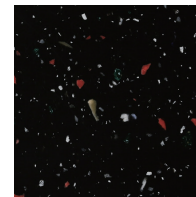
Tempest Grey
SM2196
风暴灰



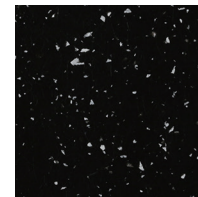
Sandy Mist
SM3560
黄沙麻



Light Blue Hemp
SM2198
浅蓝麻



Starry Sky
SM3513
星空



Deep Black Hemp
SM2199
深黑麻

Granite Collection | 岩晶

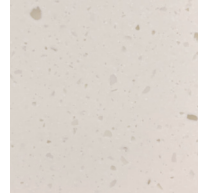
Inspired by both man-made and natural materials, these luxuriously smooth surfaces offer an extraordinary clarity and depth of pattern and color



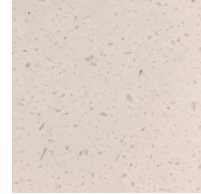
Antarctica
SM6707
南极



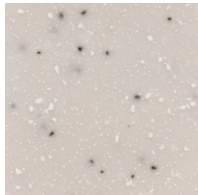
Constellation
SM3773
黄沙白石



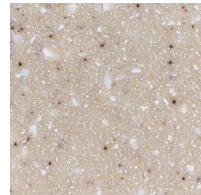
Illusion
SM4185
幻白



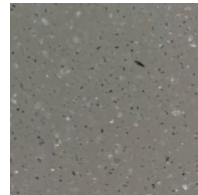
Graceful Rock
SM6311
白雅石



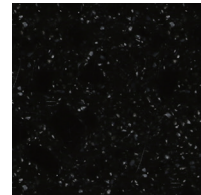
Quartzite
SM3615
石英岩



Sand Brown
SM6709
砂褐



Quartz Grey
SM6711
石英灰



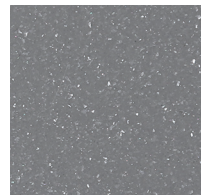
Obsidian
SM3614
黑曜石

Metallic Collection | 晶粒

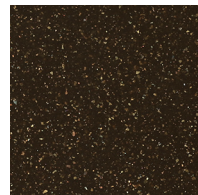
Inspired by winter sky, from daytime to mysterious midnight, with a comfortable diamond sparkle, delight whole environment in a sophisticated approach.



Metallic White
SM3923
闪晶白



Silverite
SM3924
闪晶银



Metallic Brown
SM3925
闪晶棕



Metallic Black
SM3922
闪晶黑

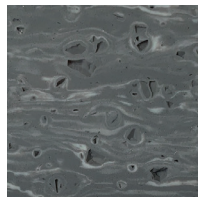


此商品图片仅供参考，请以实物为准

When making a final decision on Formica® Solid Surfacing-Surell®, please view the color on an actual product.

Marble Collection | 云石

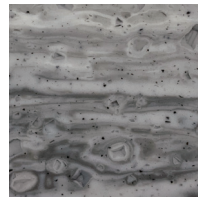
The Marble Collection has the appearance of stunning natural stones, with its dimensional large scale movement and pattern.



Black Roma
SV17
洞石墨



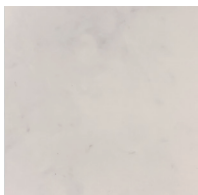
White Roma
SV18
洞石白



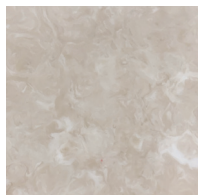
Grey Roma
SV19
洞石灰



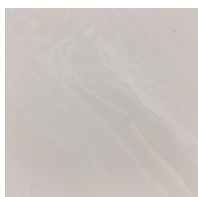
Calaratta
SV20
鱼肚白



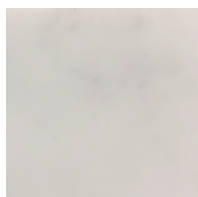
Carrana White
SV02
卡拉白



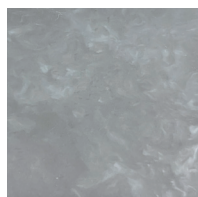
Almond Fancy
SV05
杏黄



Cloud White
SV09
云彩白



Nimbus Cloud
SV55
雨云



Galaxia Grey
SV92
银河灰



此商品图片仅供参考，请以实物为准

When making a final decision on Formica® Solid Surfacing-Surell®, please view the color on an actual product.

Use & Care Guide 使用 & 维护指导

在简单的护理和预防措施下，色麗石® 实体面材将给予您长久的优质体验与享受。

SURELL® solid surfacing material will give you years of service and enjoyment with some simple care and precautions.



● 清洁维护

使用湿布或家用清洁剂擦拭，保持清新干净的外观。

● 去除污渍，水渍，香烟灼伤和轻微刮痕

使用研磨性清洁剂和擦洗海绵，例如3M Scotch-Brite品牌的绿色/黄色厨房百洁布或类似的红褐色工业垫(3M Scotch-Brite品牌#7447)。

● 去除顽固污渍或深划痕

使用细砂纸打磨，然后按如上述步骤操作。

● 抛光

抛光需要专业人员操作，请联系当地经销商或加工商寻求帮助。

● 严重损伤修复

修复严重的损伤需要专业人员操作，请联系当地经销商或加工商寻求帮助。

● TO KEEP CLEAN AND REMOVE SIMPLE STAINS:
Use a damp cloth and any household detergent to maintain a fresh and clean look.

● TO REMOVE STUBBORN STAINS, HARD WATER DEPOSITS, CIGARETTE BURNS AND MINOR SCRATCHES ON MATTE-FINISH MATERIALS :
Use an abrasive cleanser or an abrasive scrub sponge such as 3M Scotch-Brite brand green/yellow kitchen scrub sponge or the equivalent maroon industrial pad(3M Scotch-Brite brand #7447).

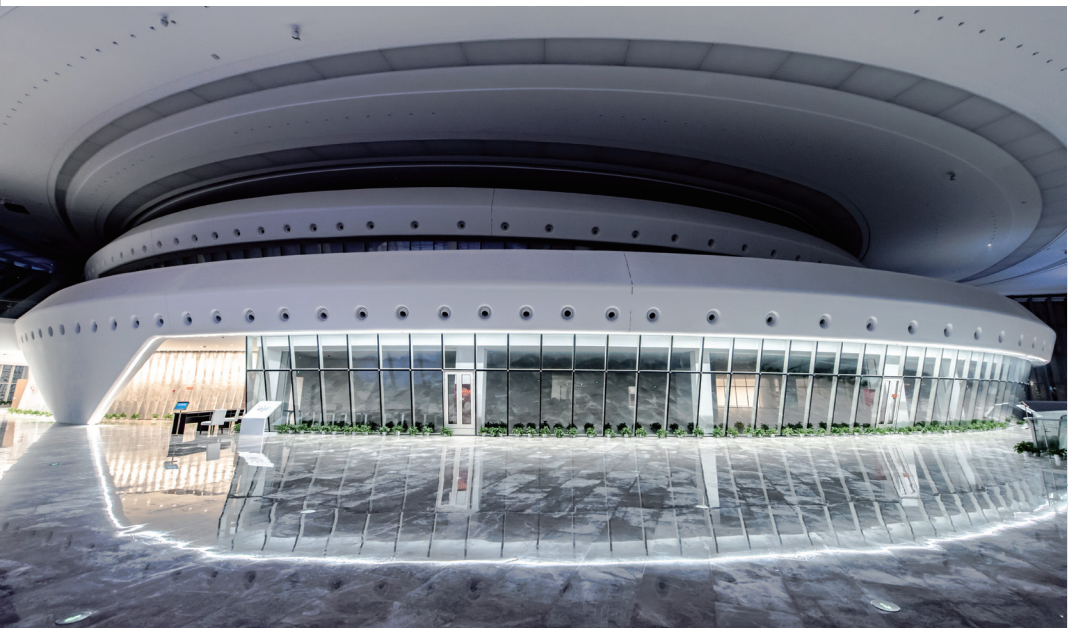
● TO REMOVE DEEP STAINS AND SCRATCHES:
Use fine sandpaper and then finish as mentioned above.

● TO RESTORE POLISHED SURFACES:
Special skills and equipment are required to restore polished finishes. Consult your fabricator or dealer for assistance.

● TO RESTORE SEVERE DAMAGE:
Special skills and equipment are required to repair damaged sections. Consult your fabricator or dealer for assistance.

Job Reference

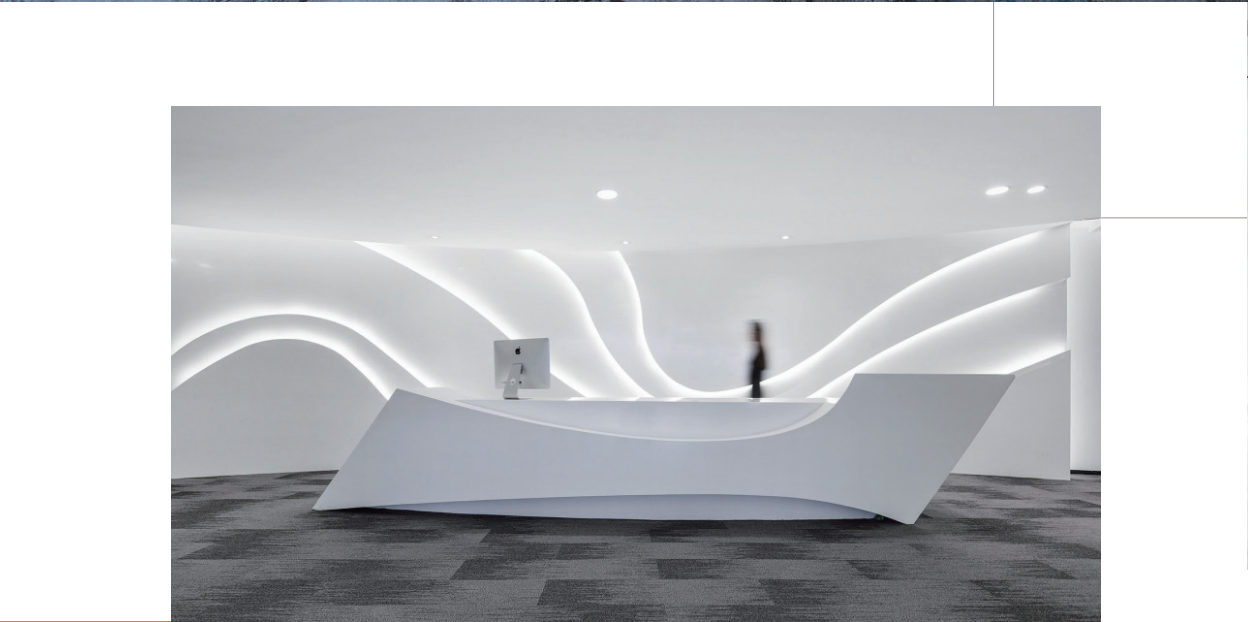
此商品图片仅供参考，请以实物为准
When making a final decision on Formica's Solid Surfacing-Surall™, please view the product on an actual product.

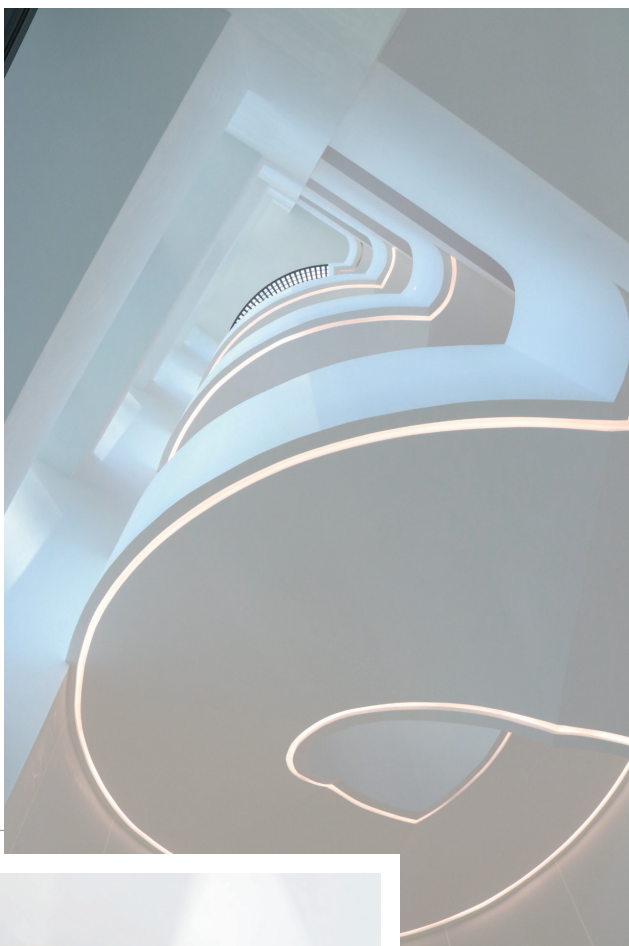




Job Reference

此商品图片仅供参考，请以实物为准
When making a final decision on Formica® Solid Surfacing-Surell®, please view the color on an actual product.





Job Reference

此商品图片仅供参考，请以实物为准
When making a final decision on Formica® Solid Surfacing-Surell™, please view the color on an actual product.





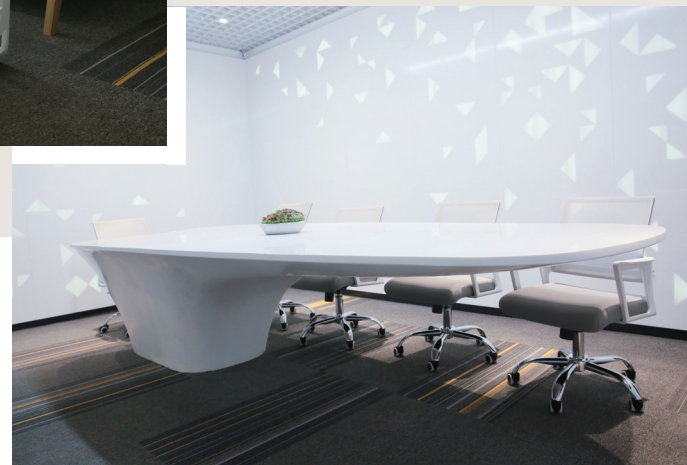
产品应用 — 教育空间



Job Reference

此商品图片仅供参考，请以实物为准
When making a final decision on Formica® Solid Surface-Surfaces, please view the color on an actual product.

此商品图片仅供参考，请以实物为准
When making a final decision on Formica® Solid Surfacing-Surfill™, please view the color on an actual product.



产品应用 — 办公家具

富美家®色麗石®产品介绍

Surell® Description

1. 基本介绍

富美家®实体面材-色麗石®可应用于室内装饰，非常适用于对美观、耐用、耐污有要求的场所。平面的应用包括梳妆台、台面、住宅及商用家具、窗台等，立面应用包括墙板，隔断，淋浴间等。

BASIC USES

Formica® Solid Surfacing – Surell® is manufactured for interior applications where a decorative, durable, wear and stain resistant surface is required. Horizontal applications include vanity tops, countertops, residential and commercial furniture, window sills and thresholds. Vertical applications include wall panels, wainscoting, backsplashes, baseboards, and bath and shower enclosures.

2. 特性介绍

富美家®实体面材-色麗石®具有独特的热弯性能，可以做出富有创造力的外形，其可塑性超越您的想象。（具体的方案制定，请咨询富美家推荐的顾问公司）。富美家®实体面材-色麗石®可实现无缝拼接，不易滋生细菌，无需特殊的清洁要求，仅需湿布和普通的清洁剂，大部分的污渍和灰尘可以被轻易擦洗，较顽固的污渍，建议使用研磨性清洁剂和擦洗海绵，例如：
3M Scotch-Brite品牌的绿色/黄色厨房百洁布或类似的红褐色工业垫(3M Scotch-Brite品牌# 7447)。

PERFORMANCE

Formica® Solid Surfacing – Surell® has the unique quality where it can be thermoformed to various shapes that is necessary. The high flexibility goes beyond your imagination. Regarding the thermoforming technique and instruction, please consult our Thermoforming technical brief Formica® Solid Surfacing – Surell® is a high density with non-porous surface. It is a hygienic surface and does not support the growth of the bacteria. It does not require any specialist cleaning agent. Most of the stain and dirt can be easily wiped off with a damp cloth and ordinary soap. Stubborn stain should be handled by professional with Scotch Brite pad #7448. Formica® Solid Surfacing – Surell® can offer you a safe standard.

3. 标准规格和厚度

富美家®实体面材-色麗石®板材规格如下：
厚度：12mm 宽度：760mm 长度：3050mm

STANDARD SIZES AND THICKNESSES

Formica® Solid Surfacing – Surell® sheets are available in:
Thicknesses of 12mm Width of 760mm Lengths of 3,050mm

4. 安装

富美家®实体面材-色麗石®需通过专业的加工商进行加工和安装。您可以咨询当地的富美家经销商。

INSTALLATION

Formica® Solid Surfacing – Surell® may be installed over vertical substrates including gypsum board, ceramic tile, plywood, and plaster. Please consult your local dealer for detail information.

5. 养护

富美家®实体面材-色麗石®板材（标准表面处理）可使用湿布，普通清洁剂或家用洗涤剂进行清洁，不要使用强酸碱的清洁剂，强酸碱清洁剂会破坏产品表面。

MAINTENANCE

Formica® Solid Surfacing – Surell® sheets and sinks/bowls may be cleaned with a damp cloth and ordinary soap, household liquid detergent, household chlorine bleach, or (for matte finish) a powdered cleanser. Strong acid or alkaline drain cleaners and oven cleaners will damage the surface.

6. 保护措施

高温：请勿直接将高温物体（如：茶壶）放置在富美家®实体面材-色麗石®板材上，高温厨具或发热设备会损坏台面，建议使用杯垫或锅垫。

切割：请勿在富美家®实体面材-色麗石®板材直接进行切割操作，材料会有切割痕迹。建议使用砧板。
污渍：富美家®实体面材-色麗石®可抵御大部分常见污渍，而一些强酸或强碱清洁剂和清洁剂会损坏材料表面，意外地从溢出或溅出应立即擦拭干净，然后用水冲洗干净。潜在的有害物包括:马桶清洁剂、排水管清洁剂、除锈剂、接触剂，粘合剂溶剂，陶瓷灶台清洁剂，烤箱清洁剂，油漆或清漆去除剂，漆稀释剂，金属清洁剂等。

PRECAUTIONS

Heat: Do not place high temperature objects (e.g. Teapot) or heat-generating appliances directly on the Formica® Solid Surfacing – Surell® product. Hot cookware and heat generating appliances can damage the countertop surface. The use of a trivet or other insulating pad is recommended.

Cutting: Avoid cutting on your Formica® Solid Surfacing – Surell® top. Under excessive or abusive usage conditions, Formica® Solid Surfacing – Surell® material will show cut marks. The use of a cutting board is recommended.

Stains: While Formica® Solid Surfacing – Surell® is resistant to most common household chemicals, some strong acid or alkaline cleaners and cleansers can mar or permanently discolor Formica® Solid Surfacing – Surell® if allowed to remain on the surface for an extended period. Accidental spills or splatters from harsh materials should be wiped off immediately and then rinsed with water. Potentially harmful compositions include: toilet bowl cleaners, drain cleaners, rust removers, contact adhesive solvent, ceramic cooktop cleaners, oven cleaners, paint or varnish removers, lacquer thinners, metal cleaners.

7. 注意事项

标准的富美家®实体面材-色麗石®不可用于户外。请勿使用在长期暴露于高于175°F(79°C)的环境。
标准的富美家®实体面材-色麗石®不可作为结构材或地面材料。深色的材料建议使用在较低使用频率的场所，深色材料需要更多的维护和翻新，特别是在厨房台面，餐厅台面，吧台等场所。应避免干冰和台面接触。

LIMITATIONS

Formica® Solid Surfacing – Surell® sheets should not be used in exterior applications. Do not use in areas exposed to sustained temperatures in excess of 175°F (79°C). Formica® Solid Surfacing – Surell® should not be used for structural applications or flooring. Dark colored solid surface is recommended only for light duty applications such as residential vanities, custom furniture, signage, backsplashes, and accent strips. Wear and scratches will be more apparent on dark surfaces in heavy use applications, such as countertops and work surfaces. Dark colors will require more maintenance to retain a like-new appearance, especially on kitchen countertops, restaurant table tops/bars or other applications where heavy use may occur. Dry ice should not come in contact with Formica® Solid Surfacing – Surell®.

系列	型号	英文名	中文名	库存色	起订量	
纯雅系列 Elegant	SM6951	Almond Fancy	冰川白	●		
	SM3639	Alabaster	雪花白	●		
纯色系列 Solid	SM3101	Arctic	北极白		20	
	SM6901	Mandarin	桔子	●		
	SM6902	Noctume	黑夜	●		
	SM6903	Sun	太阳	●		
	SM6904	Rose	蔷薇	●		
	SM6905	Jade green	翡翠	●		
	SM6906	Sky Blue	天蓝	●		
	SM6907	Vivid Green	嫩绿	●		
	SM6908	Ultra White	超白	●		
	SM6909	Dark Grey	深灰	●		
	SM6910	Hot Red	火红	●		
	SM6911	Ivory White	象牙白	●		
	SM6912	Cream White	奶白	●		
	岩麻系列 Silestone	SM2191	Almond Hemp	扁桃麻	●	
SM2193		Vanilla	香草蜜		20	
SM2195		Milk Mist	雾白		20	
SM2196		Tempest Grey	风暴灰	●		
SM2197		Milky Sands	白沙	●		
SM2198		Light Blue Hemp	浅蓝麻		20	
SM2199		Deep Black Hemp	深黑麻	●		
SM3104		White Quartz	石英白	●		
SM3440		Winterhaze	寒星石		20	
SM3502		Snowflake	雪花玉		20	
SM3512		Hailstones	冰雹	●		
SM3513		Starry Sky	星空		20	
SM3518		Abalone	鲍鱼	●		
SM3560		Sandy Mist	黄沙麻		20	
SM3566		Linen	亚麻布	●		
SM3653		Glacier Ore	汉白玉		20	
SM3617		Pearl Agate	雪花片	●		
SM3624		Cognac Agate	玛瑙黄		20	
岩晶系列 Granite		SM6707	Antarctica	南极	●	
		SM6711	Quartz Grey	石英灰	●	
	SM3614	Obsidian	黑曜石		20	
	SM3615	Quartzite	石英岩		20	
	SM3773	Constellation	黄沙白石		20	
	SM6311	Graceful Rock	白雅石		20	
	SM4185	Illusion	幻白		20	
	SM6709	Sand Brown	砂褐		20	
晶粒系列 Metallic	SM3922	Metallic Black	闪晶黑		20	
	SM3923	Metallic White	闪晶白	●		
	SM3924	Silverite	闪晶银		20	
	SM3925	Metallic Brown	闪晶棕		20	
云石系列 Marble	SV17	Black Roma	洞石墨	●		
	SV18	White Roma	洞石白	●		
	SV19	Grey Roma	洞石灰	●		
	SV20	Calaratta	鱼肚白	●		
	SV02	Carrana White	卡拉白		25	
	SV05	Almond Fancy	杏黄		25	
	SV09	Cloud White	云彩白		25	
	SV55	Nimbus Cloud	雨云		25	
	SV92	Galaxia Grey	银河灰		25	

SMxxxx为纯亚克力产品，SVxx为复合亚克力产品