

INCANTO





THE RICHNESS OF EARTH'S
NATURAL TEXTURES MAKE
LIVING SPACES COME ALIVE.





Earth's beauty lies in textures. The deeply etched grooves of limestone caves, the swell of mountains rising above the land, snowflakes clinging to tree branches in the winter light. These intricate patterns form magnificent canvases for the home. They bring depth and layers, harmony, and dimension.



INCANTO. A COLLECTION OF 44 HIGH-PRESSURE LAMINATES.

Inspired by the breath-taking landscapes of Europe, Formica Incanto collection captures the grandeur of its natural beauty. This curated selection of decors is exclusively designed with a residential focus, paying homage to the tactile textures and aesthetic charm of natural materials.

Invite the allure of the European landscape into your home with Formica Incanto and experience the captivating elements of nature like never before.

8



0965PT
Breccia Silver





Snow-dusted peaks whisper stories that those on the foothills seek.



Connect with nature at home. Feel the presence of wonder.

INCANTO. ITALIAN FOR ENCHANTMENT AND CHARM.

Like a magical spell, Formica Incanto transform living spaces into inner landscapes.

Formica Incanto isn't just about design - it's about changing the mood and feel of your living spaces by bringing the essence of nature indoors.

These surfaces are more than just a visual experience, they create a living landscape that lets you connect with nature on a deeper level.

It's an emotional connection that resonates with your soul.

11



8806OG
Eucalyptus Naturale

SUNLIGHT FALLS UPON A FIELD LIKE LIQUID GOLD.

12



With light, the pastures are luminescent. Never still.



The ripple of gentle shadows as braided kernels bend on stems. Partial crowns on this decor reflect the contours of a wheaten land yielding to the sun's rays.



0939OG
Olmo Downpour Retro

BEAUTY IS BORN WHEN EARTH'S PIGMENTS QUARRY WITH COLOUR.

The dappling tones of Venetian plaster create a sense of harmony and texture at home. Enlivened by natural light, enigmatic as the light fades. A decor that lives and breathes with its inhabitants.

14



1002PT
Venetian Plaster Storm



Nature is a mood as shifting as our own.





08710G
Rovere Planked Naturale

Time enriches the mountains with character and structure.



08820G
Grimspound Planked

Hewn by the winds, tinted by the sun, carved by the rains.



It's an entrancing trick how the sun glows brighter in the snow.

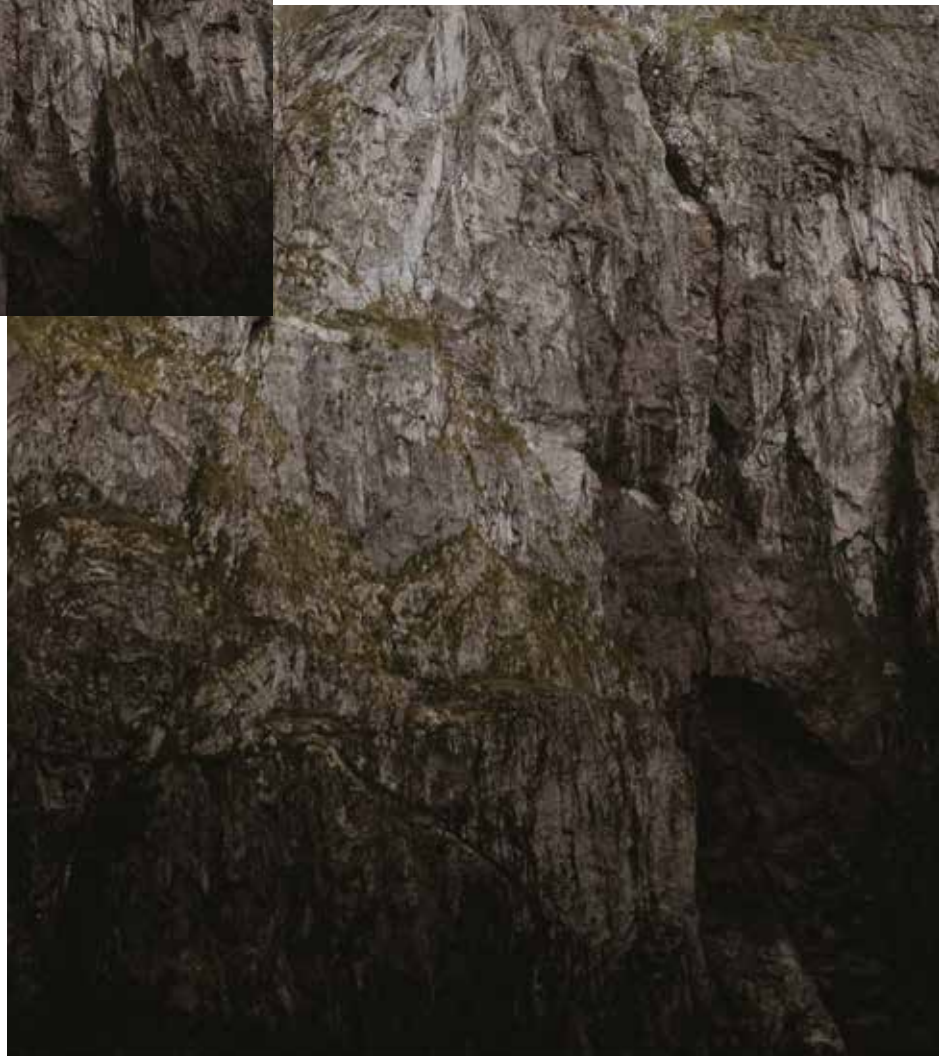
NATURALLY DRAMATIC. ETERNALLY TIMELESS.

The jagged sweep of mountain peaks.
Breathtaking Dolomite spires. Marbled,
iridescent beauty lies within our reach.
Nature is not a place to visit. It is home.



0964PT
Veneto Marble

MEMORIES ETCHED IN NATURE



20

*Deep within the grand terrain, the ground's
secrets wait to exhale.*



0993KL
Slate Urban

Every cleft and crevasse harbours a reminder. An imprint of time spent basking in Italy's grand natural beauty. At home, these textures are a quiet call to adventure. Dreams of mountains to be climbed.



8810D8
Mocha Reed



LIVE IN THE GREEN

Dwell in the pleasures of rolling fields.
Cool winds and gentle shadows are
all part of nature's grace.

22



0878OG
Acacia Wheat





Tranquility is nature's state of mind.

Ⓐ



5969OG
Olmo
Downpour
Bianco

Ⓑ



0964PT
Veneto
Marble





25

In a room full of soft curves and natural light, the polished texture of marble and muted shades of wood provide an understated grandness.

(C)



08710G
Rovere
Planked
Naturale



In expansive, shared spaces, smooth textures impart a joyful intimacy and the luxury of easy cleaning.

(A)



5978OG
Acacia
Ash

(B)



0464
Graystone



©



0991KL
Off
White
Stone



Ⓐ



0995PT
Venetian
Plaster
Urban



28



Ⓒ

The calming elegance of wood and cement capture the warmth of the sun amongst the tranquil woods.



Ⓐ

Ⓑ

Ⓑ



5970OG
Olmo
Downpour
Carbon

Ⓒ



5965OG
Rovere
Planked
Carbon



(A)



0993KL
Slate
Urban

(B)



5964KL
Rovere
Linear
Wheat



The light tones of wood textures emphasise a serene, seamless space.



A modern take on minimalism, layered with stylish warmth. Earthy hues make for an inviting sanctuary for rest and relaxation.

Ⓐ



7976LM
Bianco
Weave



Ⓑ



8797LM
Raw
Weave



Ⓐ



1111PT
Renaissance
Slate
Greige





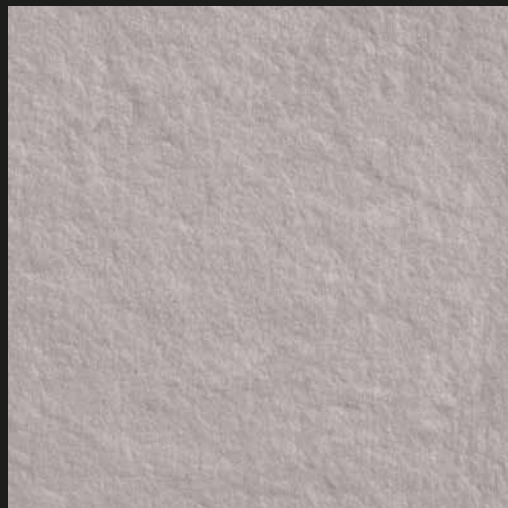
The tactility of urban-inspired surfaces – semi-warm woods and neo cement – brings life to convivial spaces.

& STONES

Venetian Plaster



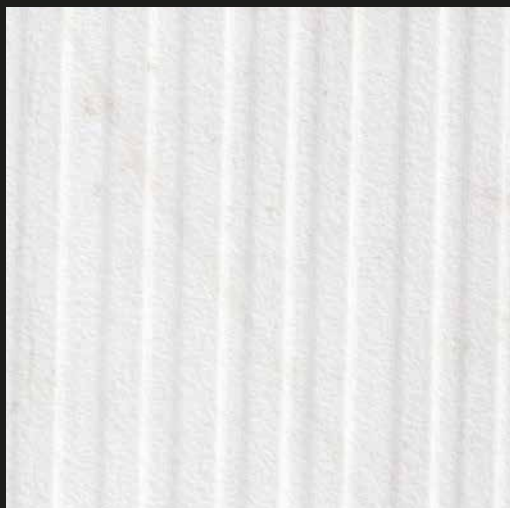
0995PT
Venetian Plaster Urban



1002PT
Venetian Plaster Storm



Marbles



0991KL
Off White Stone



0964PT
Veneto Marble



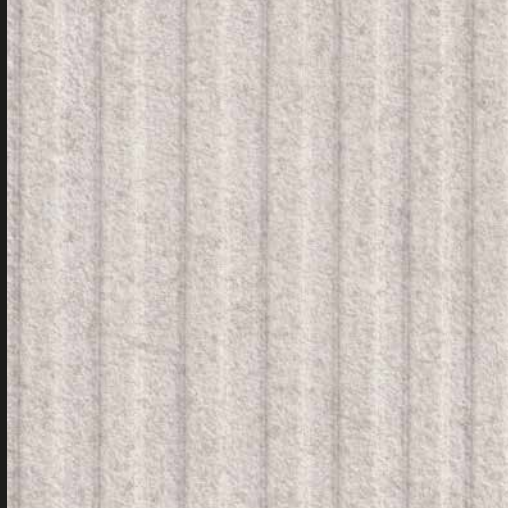
0965PT
Breccia Silver



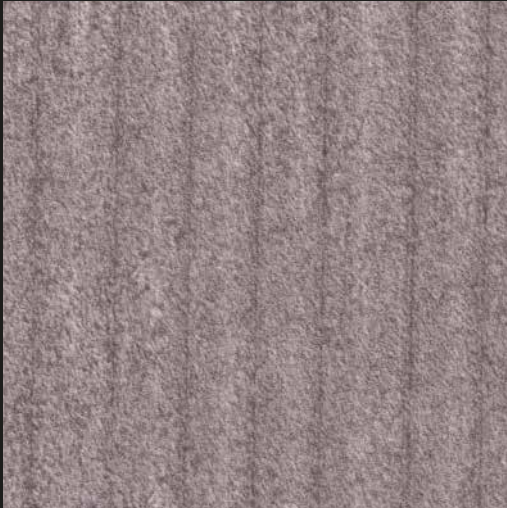
& STONES



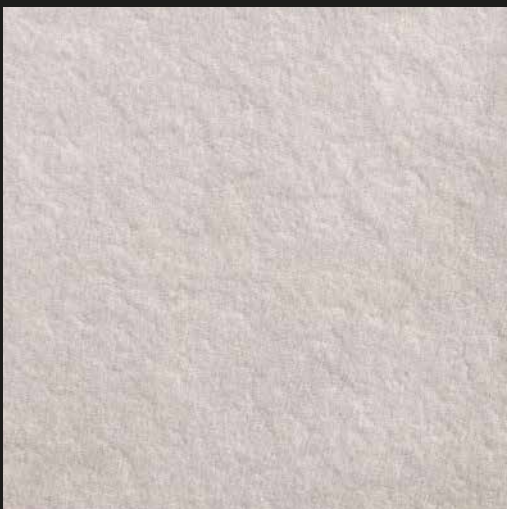
0994KL
Slate Ash



0993KL
Slate Urban



0992KL
Slate Storm



1111PT
Renaissance Slate Greige

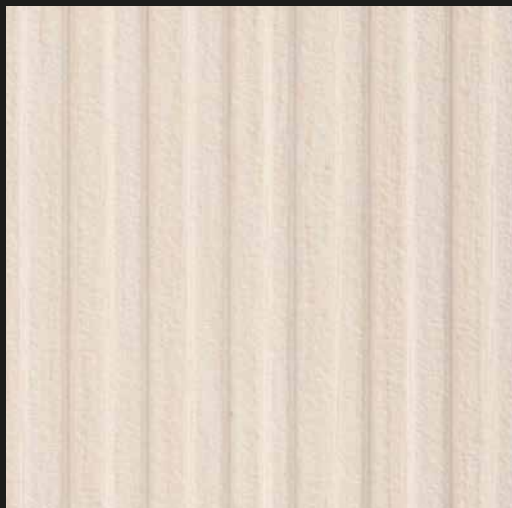


Slate

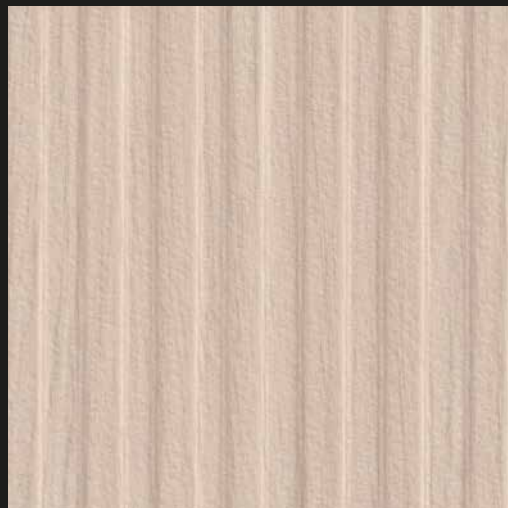
Renaissance Slate

& WOOD

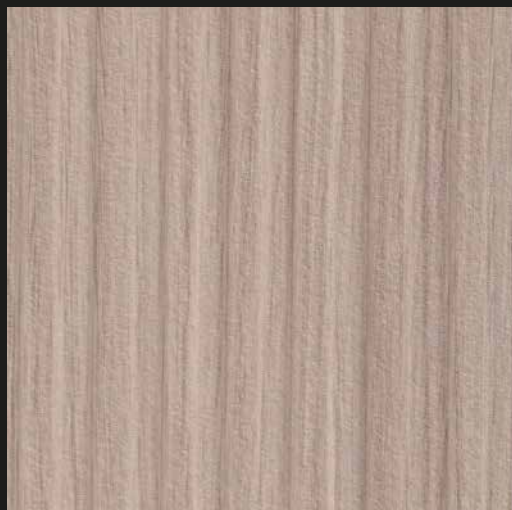
Rovere Linear
Straight



5976KL
Rovere Linear Milk



5964KL
Rovere Linear Wheat



0841KL
Rovere Linear Smoke

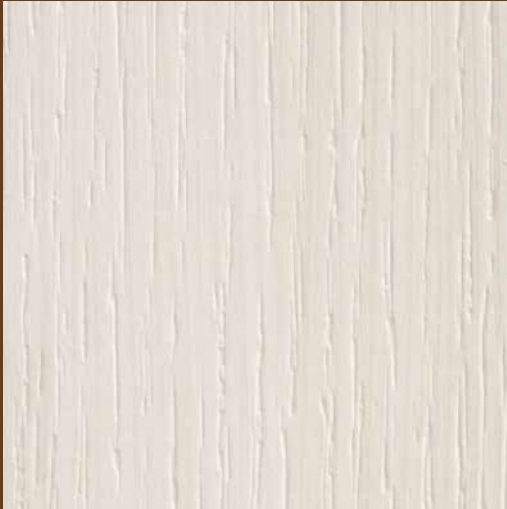


0843KL
Rovere Linear Coffee



& WOOD

Olmo Downpour
Partial Crown



5969OG
Olmo Downpour Bianco



0937OG
Olmo Downpour Wheat



5970OG
Olmo Downpour Carbon



0939OG
Olmo Downpour Retro



& WOOD

Acacia
Partial Crown



0878OG
Acacia Wheat



5978OG
Acacia Ash



5966OG
Acacia Naturale



5968OG
Acacia Mocha



& WOOD



5971D8
Teak Meadow Brown



0956D8
Teak Meadow Mist



8806OG
Eucalyptus Naturale



8808OG
Eucalyptus Slate



8807OG
Eucalyptus Thermo



Teak Meadow
Full Crown

Eucalyptus
Straight

& WOOD

Forest
Planked



5482KL
Forest Linear Ash



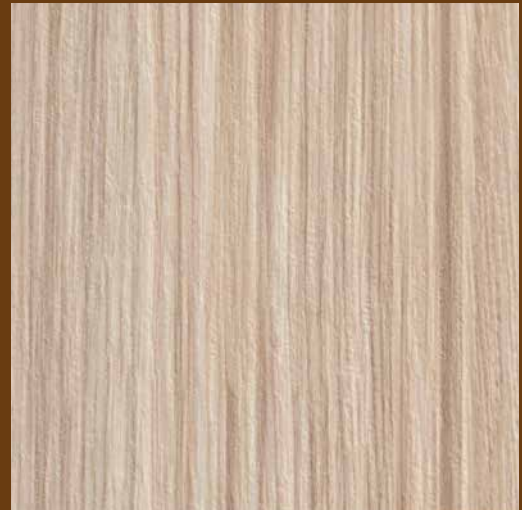
5484KL
Forest Linear Wheat



Reed
Straight



8811D8
Ash Reed



8809D8
Natural Reed



8810D8
Mocha Reed



& WOOD



0871OG
Rovere Planked Naturale



5965OG
Rovere Planked Carbon



Rovere Lumber
Planked



0872OG
Grimspound Planked Sand



0882OG
Grimspound Planked



Grimspound
Planked

& WOOD

Frassino Originale
Partial Crown



J5671OG
Frassino



Finezza Italiano
Straight



J5668OG
Finezza



Fossil Legna
Full Crown



J5669OG
Fossile



&PEARLESCENT



0844OG
Olmo Crystal Beige



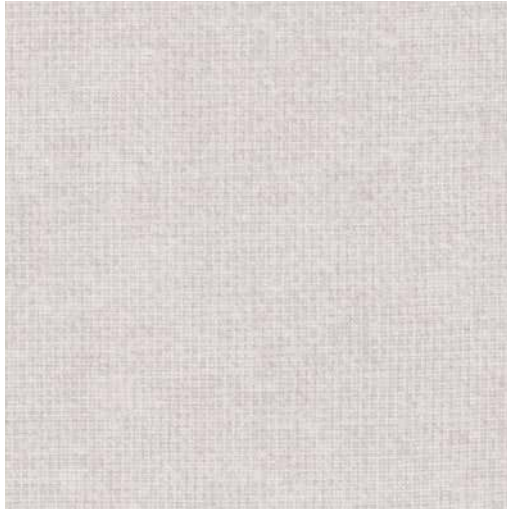
5977OG
Olmo Crystal Gray



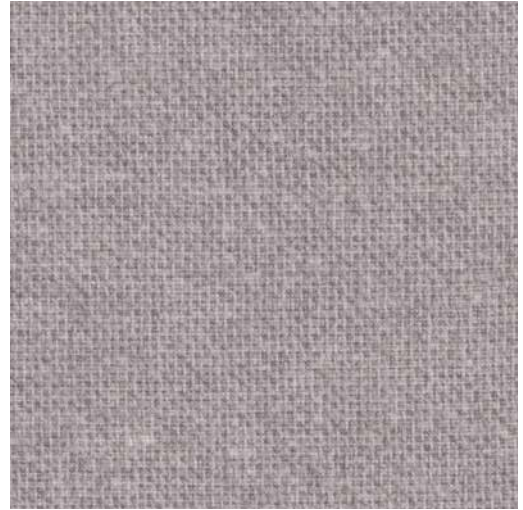
Olmo Crystal
Partial Crown

& PATTERNS

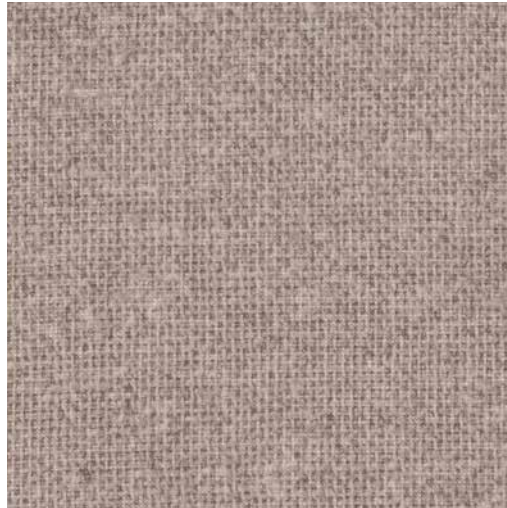
Weave



7976LM
Bianco Weave



5479LM
Grigio Weave



8797LM
Raw Weave



9287LM
Grigio Antracite Weave



46

Product specifications

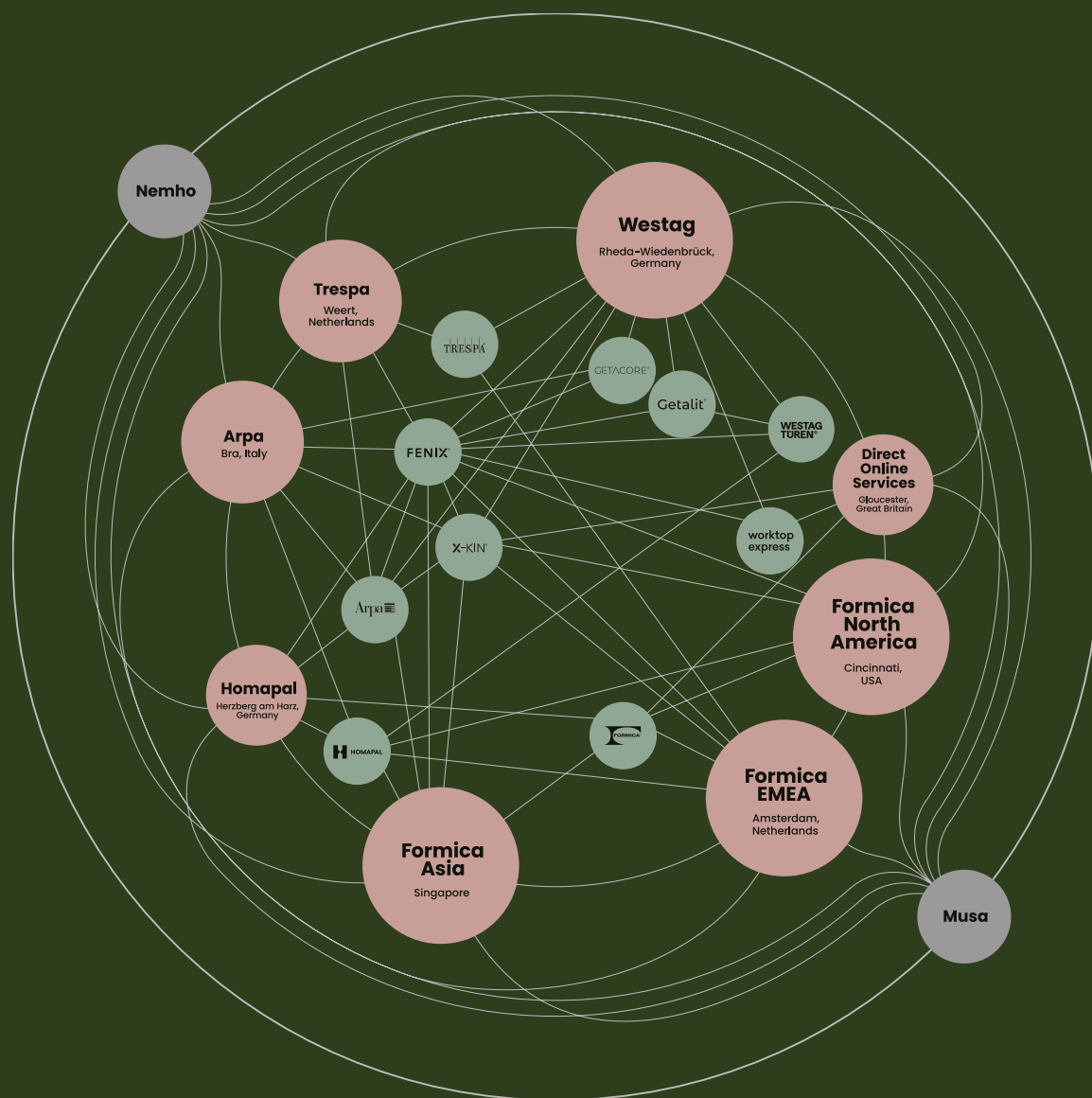
Family	Code	Name	Page	
Stones	0964PT	Veneto Marble	36	
	0965PT	Breccia Silver	36	
	0991KL	Off White Stone	36	
	0992KL	Slate Storm	37	
	0993KL	Slate Urban	37	
	0994KL	Slate Ash	37	
	0995PT	Venetian Plaster Urban	36	
	1002PT	Venetian Plaster Storm	36	
	1111PT	Renaissance Slate Greige	37	
Woods	0841KL	Rovere Linear Smoke	Straight Grain	38
	0843KL	Rovere Linear Coffee	Straight Grain	38
	0871OG	Rovere Planked Naturale	Planked	43
	0872OG	Grimspound Planked Sand	Planked	43
	0878OG	Acacia Wheat	Partial Crown	40
	0882OG	Grimspound Planked	Planked	43
	0937OG	Olmo Downpour Wheat	Partial Crown	39
	0939OG	Olmo Downpour Retro	Partial Crown	39
	0956D8	Teak Meadow Mist	Full Crown	41
	5482KL	Forest Linear Ash	Planked	42
	5484KL	Forest Linear Wheat	Planked	42
	J5668OG	Finezza	Straight Grain	44
	J5669OG	Fossile	Full Crown	44
	J5671OG	Frassino	Partial Crown	44
	5964KL	Rovere Linear Wheat	Straight Grain	38
	5965OG	Rovere Planked Carbon	Planked	43
	5966OG	Acacia Naturale	Partial Crown	40
	5968OG	Acacia Mocha	Partial Crown	40
	5969OG	Olmo Downpour Bianco	Partial Crown	39
	5970OG	Olmo Downpour Carbon	Partial Crown	39
	5971D8	Teak Meadow Brown	Full Crown	41
	5976KL	Rovere Linear Milk	Straight Grain	38
	5978OG	Acacia Ash	Partial Crown	40
	8806OG	Eucalyptus Naturale	Straight Grain	41
	8807OG	Eucalyptus Thermo	Straight Grain	41
	8808OG	Eucalyptus Slate	Straight Grain	41
	8809D8	Natural Reed	Straight Grain	42
	8810D8	Mocha Reed	Straight Grain	42
	8811D8	Ash Reed	Straight Grain	42
	Pearlescent	0844OG	Olmo Crystal Beige	Partial Crown
5977OG		Olmo Crystal Gray	Partial Crown	45
Patterns	5479LM	Grigio Weave	46	
	7976LM	Bianco Weave	46	
	8797LM	Raw Weave	46	
	9287LM	Grigio Antracite Weave	46	

ABOUT THE GROUP

We are part of the leading global group in surface materials. We are FENIX, Formica, Homapal, Arpa, Westag, Trespa and Direct Online Services. All active in material technology.

Panels, doors, worktops: our products range from HPL to solid surface, and from decorative metals to FENIX. Our 6,000 employees work in 40 countries around the world and our products are marketed in many more.

48



FEEL IN EVERY DETAIL

We are not just about creating physical spaces to live, work and play in. We are about setting the stage for a warm and aspirational future. For that reason, we take extraordinary care with the spaces you create. And ensure every detail is crafted to be felt, by touch and by the heart.



49

SUSTAINABILITY

Formica Group is a leading provider of stylistic, smart and sustainable surfacing solutions for commercial and residential customers worldwide. Since 1913, the heritage of Formica Group has been founded on quality, service, and innovative product lines.

As the world's largest manufacturer of High Pressure Laminate (HPL), our sustainability policy is built upon being "good" and having a positive impact on the world around us. Our goal is carbon neutrality by 2030 without losing sight of the product functionality our customers require.

SINCE 1913, FORMICA® DESIGNS FOR TODAY WITH FOREVER IN MIND.

FORMICA'S FOUNDING

Formica® was founded in Cincinnati in 1913 by two young men, Herbert A. Faber and Daniel J. O'Conor.

Their high-pressure plastic resins were intended to serve as electrical insulators replacing mineral Mica, which was used for that purpose at the time. Hence the name "Formica" was chosen.

World-renowned artists and architects had also begun to recognize the potential of the decorative laminates and specified them for modernist and art deco interiors.

FORMICA'S SERVICES

Formica® offers a complete range of surface decorative products with Protec+® technology (High Pressure Laminate, Formica® Compact®, ColorCore®, Formica® Custom Graphics™ and FRguard®+), premium decorative products (DecoMetal® and FENIX®) and a range of functional products (CHguard™). All Formica® High Pressure Laminates conform to European BS EN438 standards. And meanwhile, we have got the certification of ISO 9001: 2015, ISO 14001: 2015, ISO 45001: 2018, and GREENGUARD.

Formica® owns manufacturing bases worldwide, with five located in Asia. Major bases are located in Shanghai (China), Jiujiang (China), Hsinchu (Taiwan), Bangkok (Thailand) and Ahmedabad (India).

50

FORMICA'S LOGO HISTORY



1920s



1930s



1940s



1950s



1960s



1970 -1980s



1990s



100th Anniversary
in 2013



110th Anniversary
in 2023

Taiwan**Formica Taiwan Corporation***Taiwan – Taipei*

6F., No. 68-70, Section 3, Nanking East Road,
Zhongshan District, Taipei City 104, Taiwan
Tel: (886-2) 2515-1017
Fax: (886-2) 2517-0542

Taiwan – Taichung

No. 122, Jingke Rd.,
Nantun Dist., Taichung City 408, Taiwan
Tel: (886-4) 2359-5680
Fax: (886-4) 2359-5890

Taiwan – Kaohsiung

15F.-2, No. 110, Sanduo 4th Road,
Lingya District, Kaohsiung City 802, Taiwan
Tel: (886-7) 330-2365
Fax: (886-7) 330-2175

China**Formica (China) Trading Co., Ltd***China – Shanghai*

Room 407, Office Building Block B,
National Convention and Exhibition Center,
181 Laigang Road, Xujing Town, Qingpu District,
Shanghai 201702, China
Tel: (86-21) 6010-2688
Fax: (86-21) 6010-2659

China – Beijing

Rm. 2212, Tower C, Oriental Media Center, No.4 Guang Hua Road,
Chao Yang District, Beijing 100026, China
Tel: (86-10) 6581-7717
Fax: (86-10) 6581-3708

China – Guangzhou

Rm. 1209, Jie Tai Plaza, No. 218-222 Zhongshan 6 Road,
Yuexiu District, Guangzhou 510180, China
Tel: (86-20) 8132-0258/0259
Fax: (86-20) 8132-0033/0039

China – Dongguan

Rm.1412, Block 3, One Mall, No.200 Hongfu Road,
Nancheng District, Dongguan 523073, China
Tel: (86-769) 2270-2216/2219
Fax: (86-769) 2278-1770

China – Shenzhen

506, 5th Floor, Block A TCL Building, Gaoxinnan 1st Road,
Nanshan District, Shenzhen 518053, China
Tel: (86-755) 8287-4868
Fax: (86-755) 8287-4880

Hong Kong**Formica (Asia) Limited**

Room 1305-9, 13/F., Olympia Plaza,
255 King's Road, North Point, Hong Kong
Tel: (852) 2598-0117
Fax: (852) 2598-6577

Thailand**Formica (Thailand) Co. Ltd.**

51/27 Moo 2 Poochaosamingprai Road,
Bangyaprak, Phrapradaeng,
Samutprakarn, 10130 Thailand
Tel: (66-2) 701-9600
Fax: (66-2) 384-7537

Thailand Sales Office

128 A-Square, Soi Sukhumvit 26,
Khlongton, Khlongtoey, Bangkok 10110
Tel: (66-2) 285-4473 / (66-2) 285-4474
Fax: (66-2) 285-2899

Singapore**Formica (Singapore) Pte. Ltd.**

38 Armenian Street Singapore 179942
Tel: (65) 6514-1313
Fax: (65) 6846-7030

Malaysia**Formica (Malaysia) Sdn. Bhd.**

B-10-3A, Level 10, Menara Bata, PJ Trade Centre,
No. 8, Jalan PJU 8/8A, Bandar Damansara Perdana
47820 Petaling Jaya, Selangor D.E, Malaysia
Tel: (60-3) 7710-0512
Fax: (60-3) 7727-0510

India**Formica Laminate (India) Private Limited**

Block No.591/592, 6th K.M.Stone, Kalol-Vamaj Road
Village-Piyaj, Tal:Kalol Gandhinagar – 382721
Gujarat, India
Tel: (91-27) 6467-4000

Indonesia**Sales Representative Office**

Sovereign Plaza 1st Floor Unit B
Jl. TB Simatupang Kav.36
Jakarta Selatan, Indonesia 12430
Tel: (62-21) 2960-1551

Philippines**Sales Representative Office**

Unit 1401, 14th Floor, MDI Corporate Center
10th Avenue Corner 39th Street, Bonifacio Global City,
Taguig City, Philippines
Tel: (632) 553-9996
Fax: (632) 856-0407
Em: phsales@formica.com

Vietnam**Sales Representative Office**

Level 4, 414 Nguyen Thi Minh Khai Street,
District 3, Ho Chi Minh City, Vietnam
Tel: (84-28) 3832 6128
Fax: (84-28) 3832 6129

Dubai**Formica B.V.**

Clover Bay Tower, Office 1112
Marasi Drive, Business Bay, Dubai, U.A.E.
Tel: (971) 04 329 8280

For more product information,
please visit www.formica.com.

For more technical information
and certification, please visit
www.formica-asia.info.

